

STOPPER 작업 시방서



대양이엔지

STOPPER 작업 시방서

1. Line Stopping 이란 ?

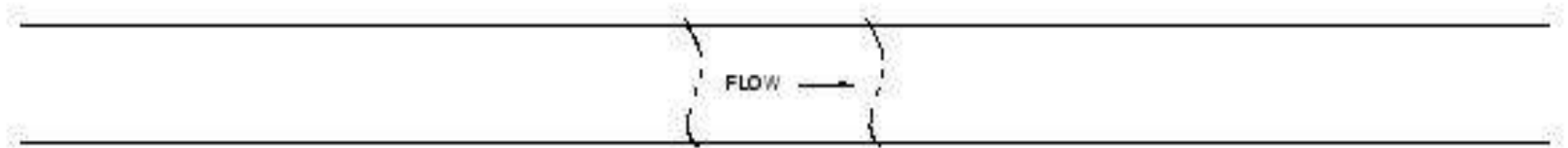
유체가 흐르는 배관에 Tapping Machine 및 Line Stop Plugging 장비를 이용하여 작업 구간을 일시 차단하여 배관의 신설, 노후 배관 교체, 밸브 교체 작업등을 유체의 공급 중단 없이 시행할 수 있다.

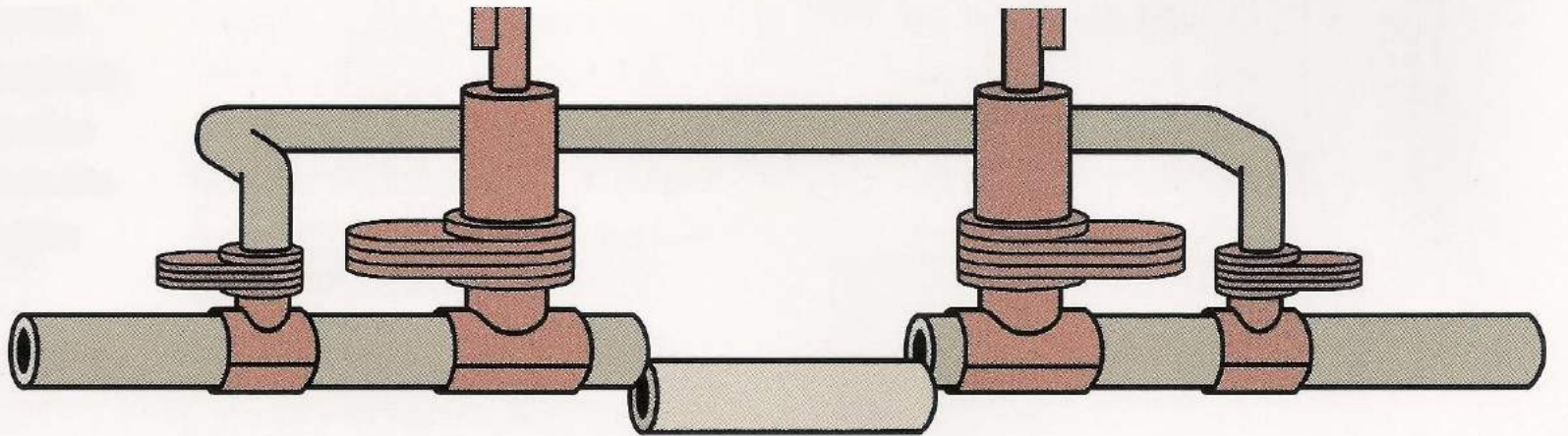
STOPPER 작업 시방서

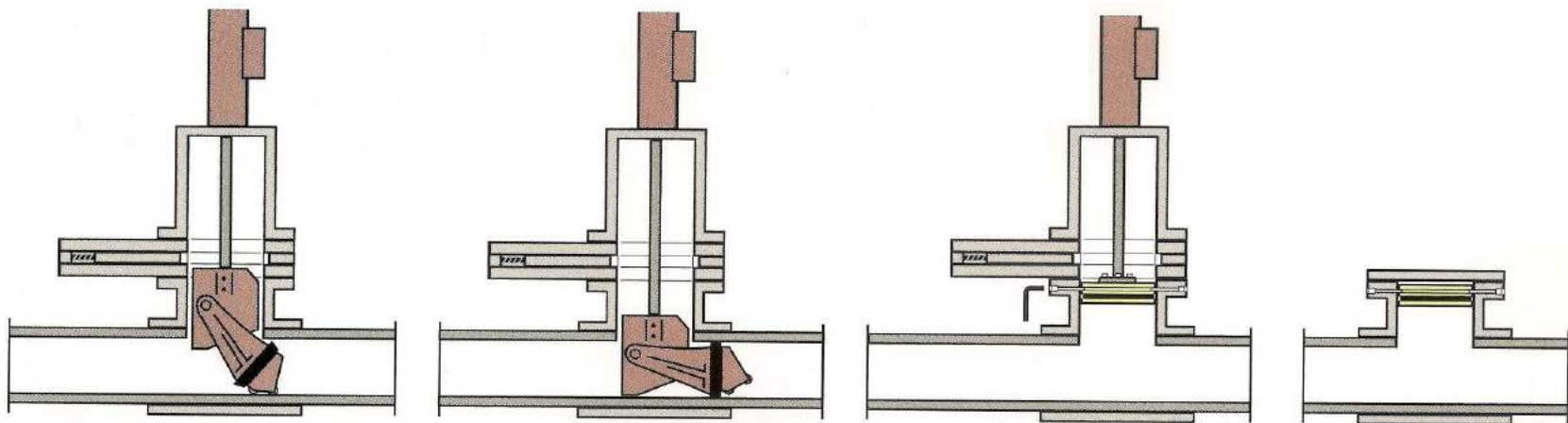
2. 적용범위

- 각종 유체의 수송 배관(정수,기름,가스,스팀배관)
- 밸브 교체 및 신설
- 배관의 이설
- 배관의 신설
- 노후 배관교체

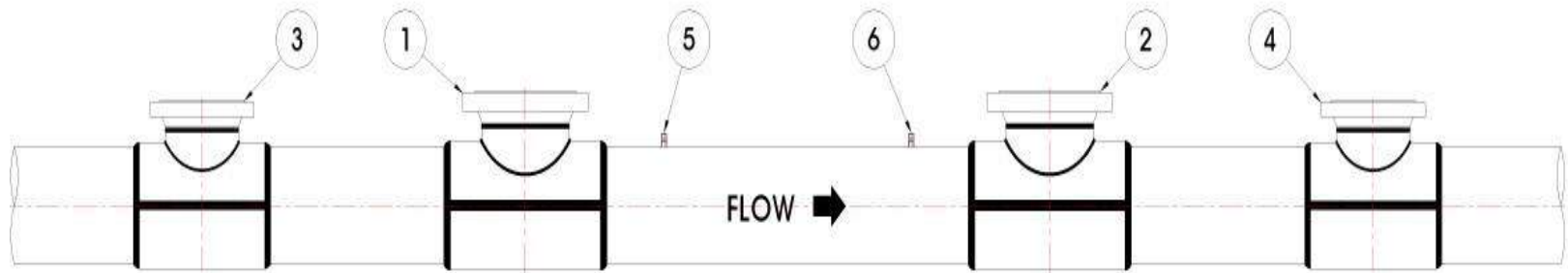
작업구간 설정





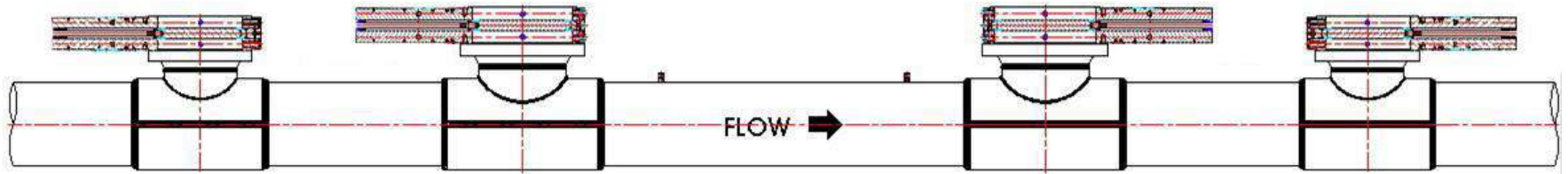


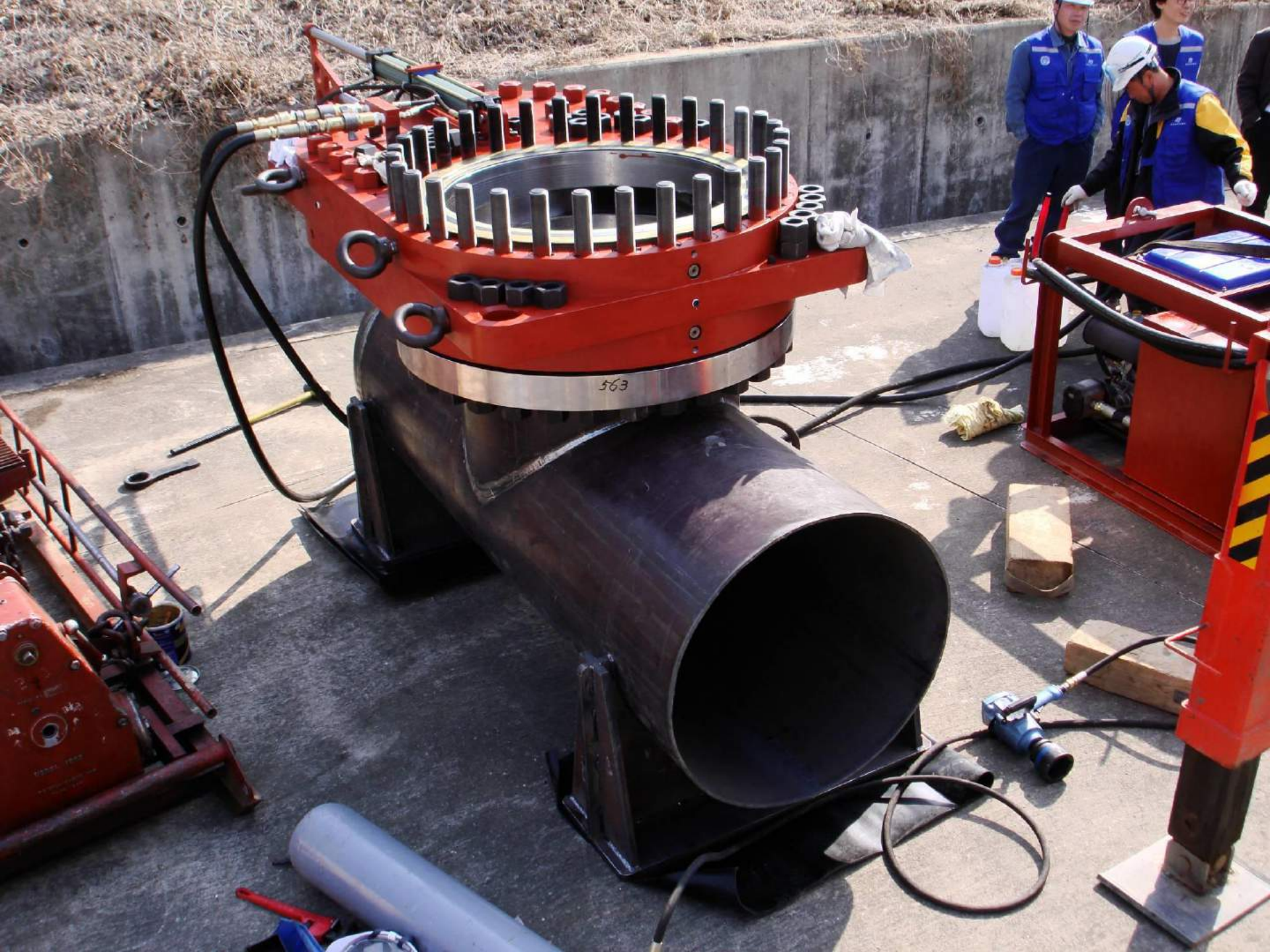
Fitting용접



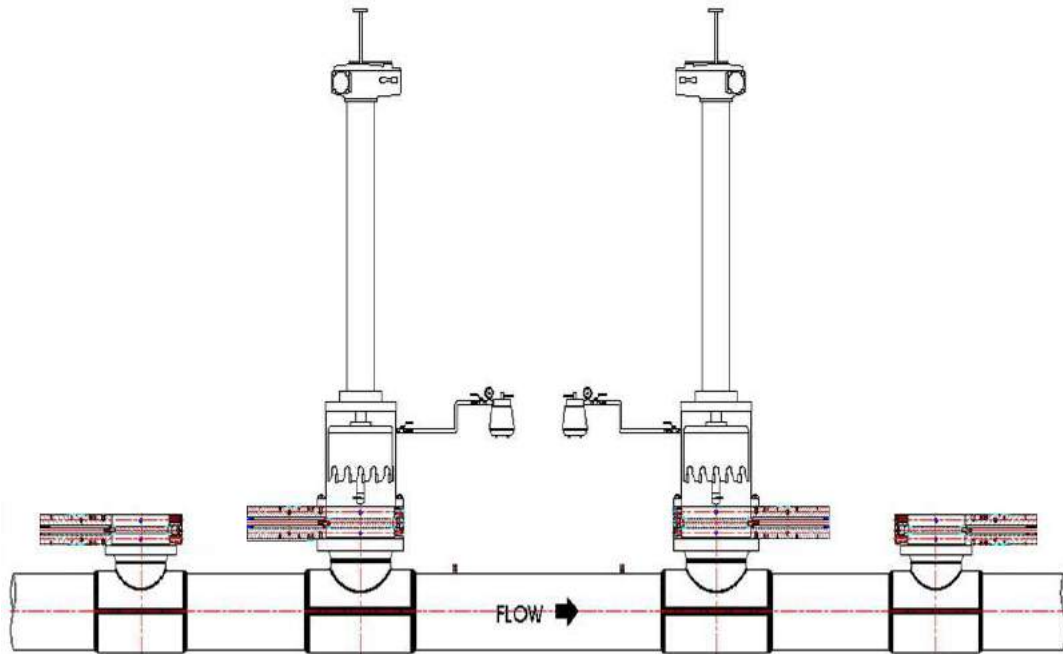


Valve 설치



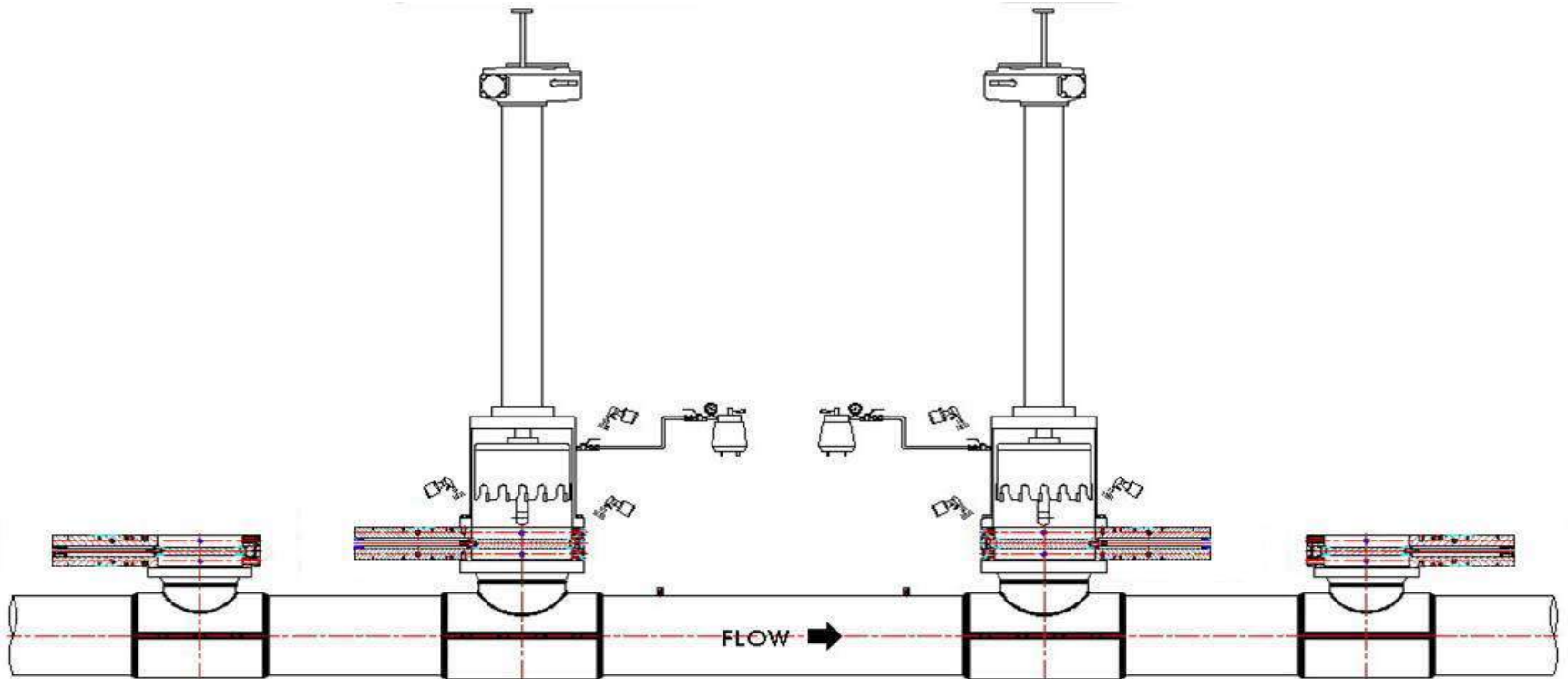


TAPPING M/C 설치



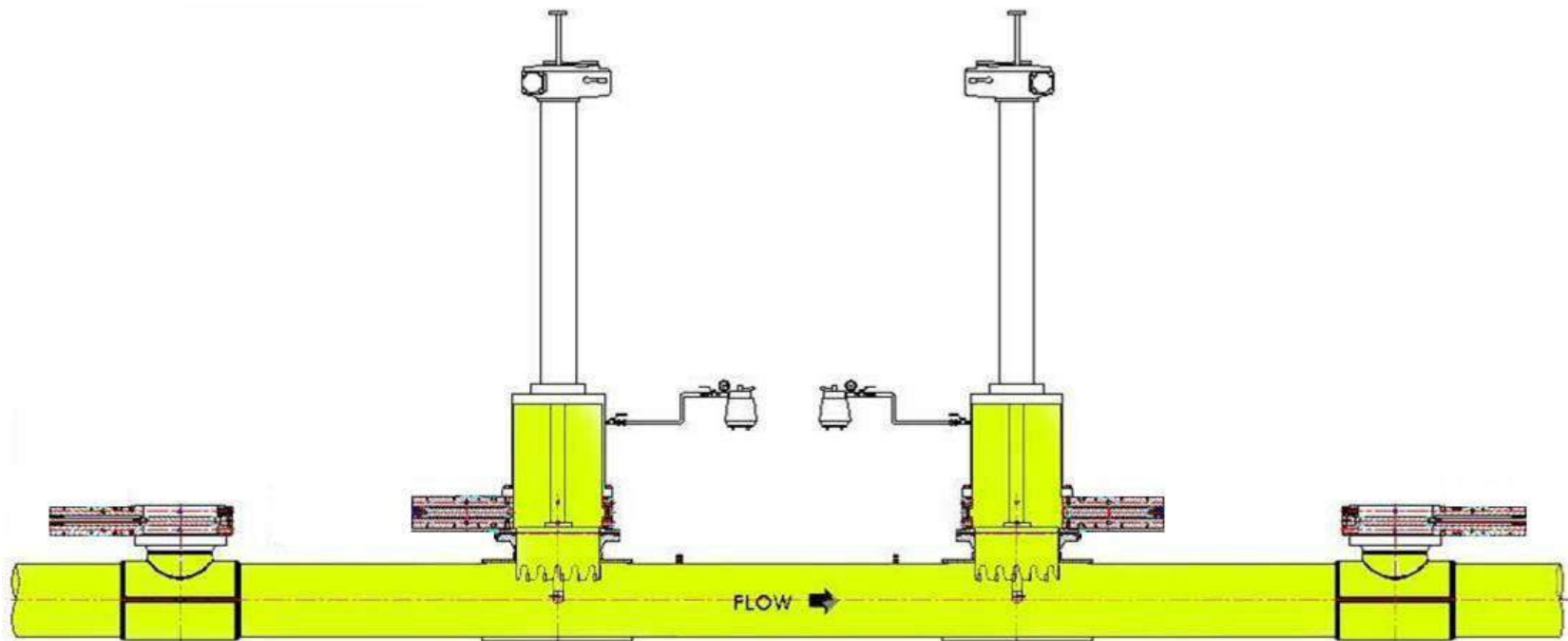


기밀시험



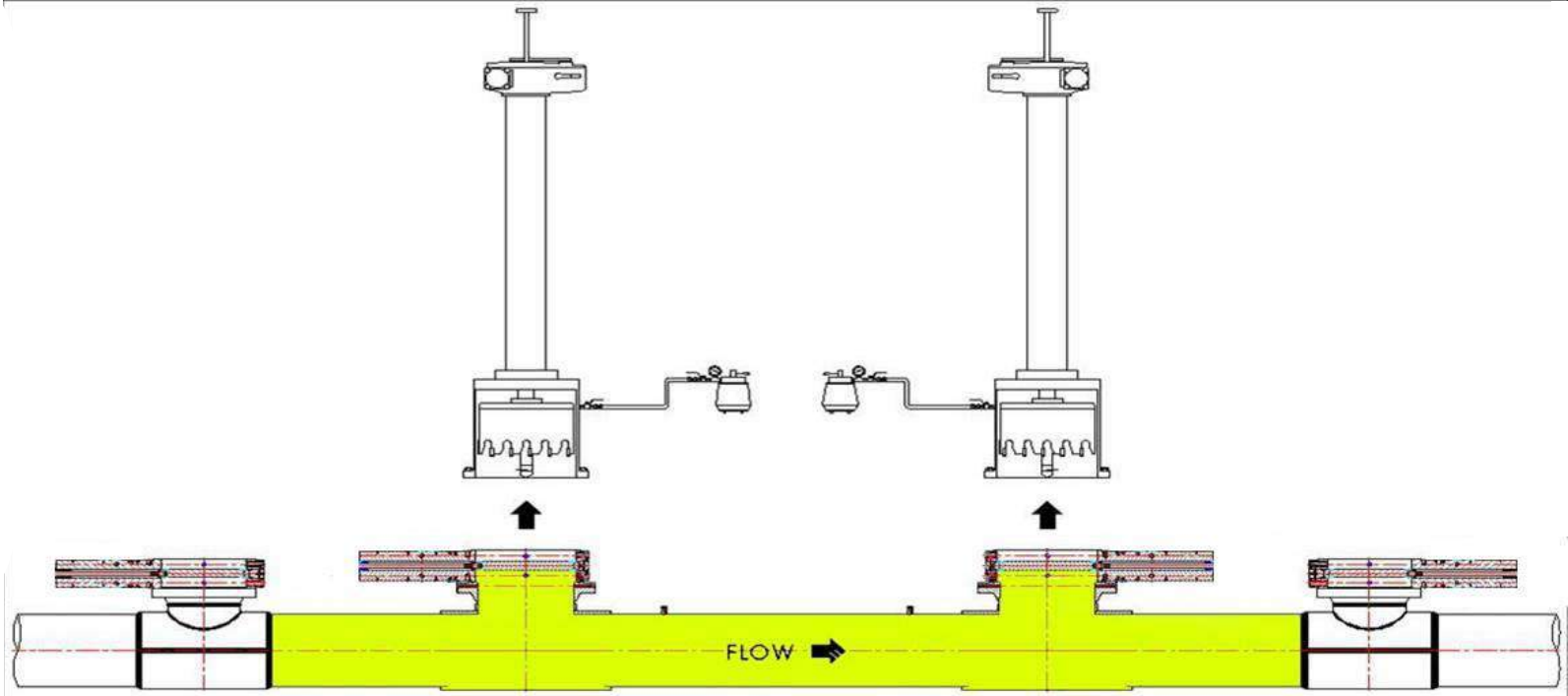


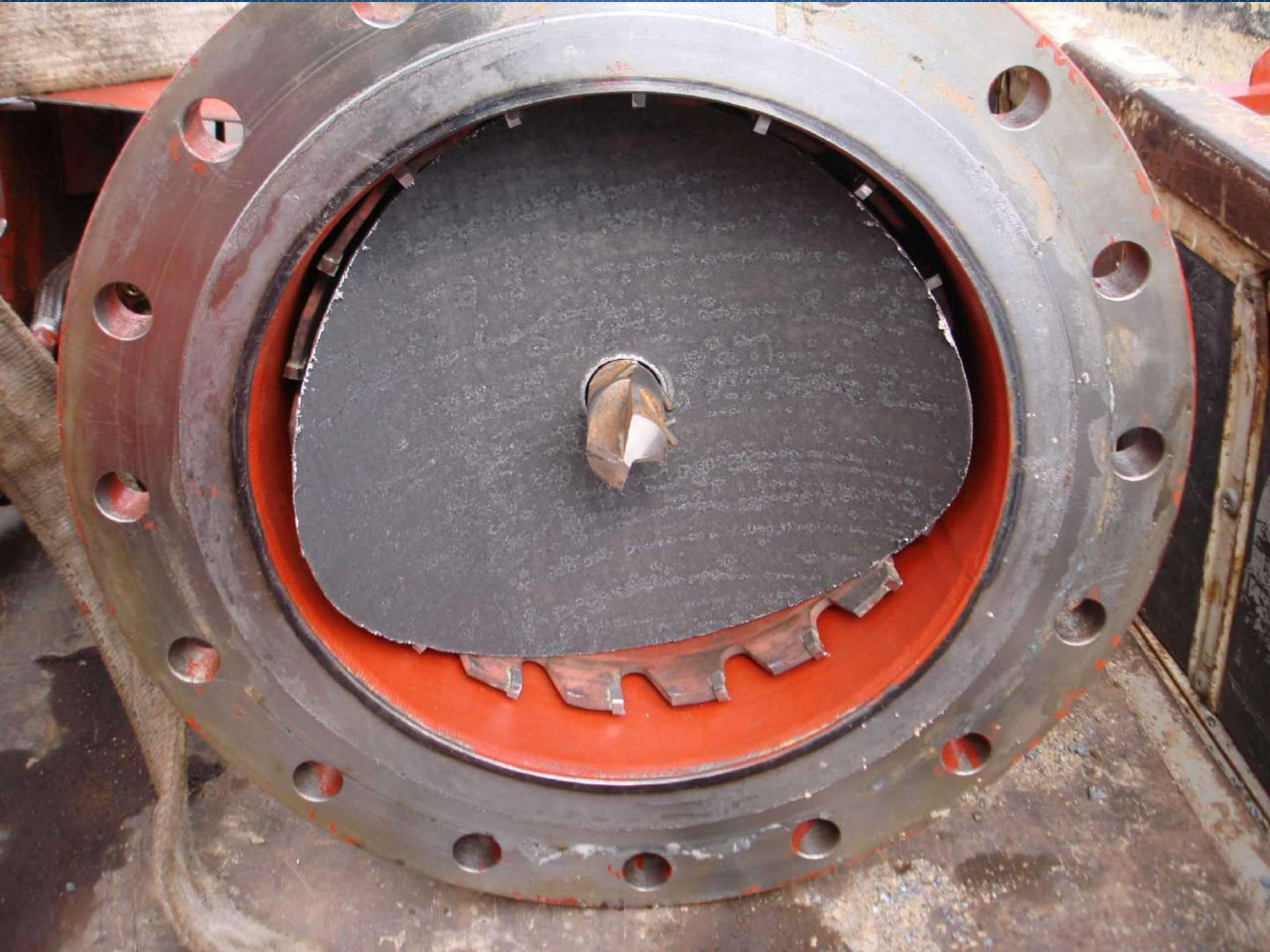
HOTTAPPING



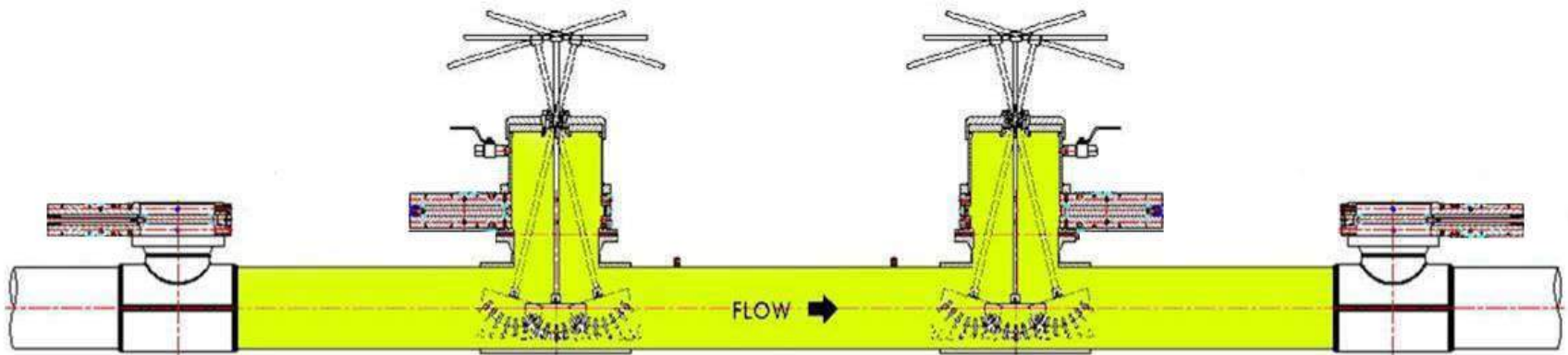


TAPPING M/C 철거



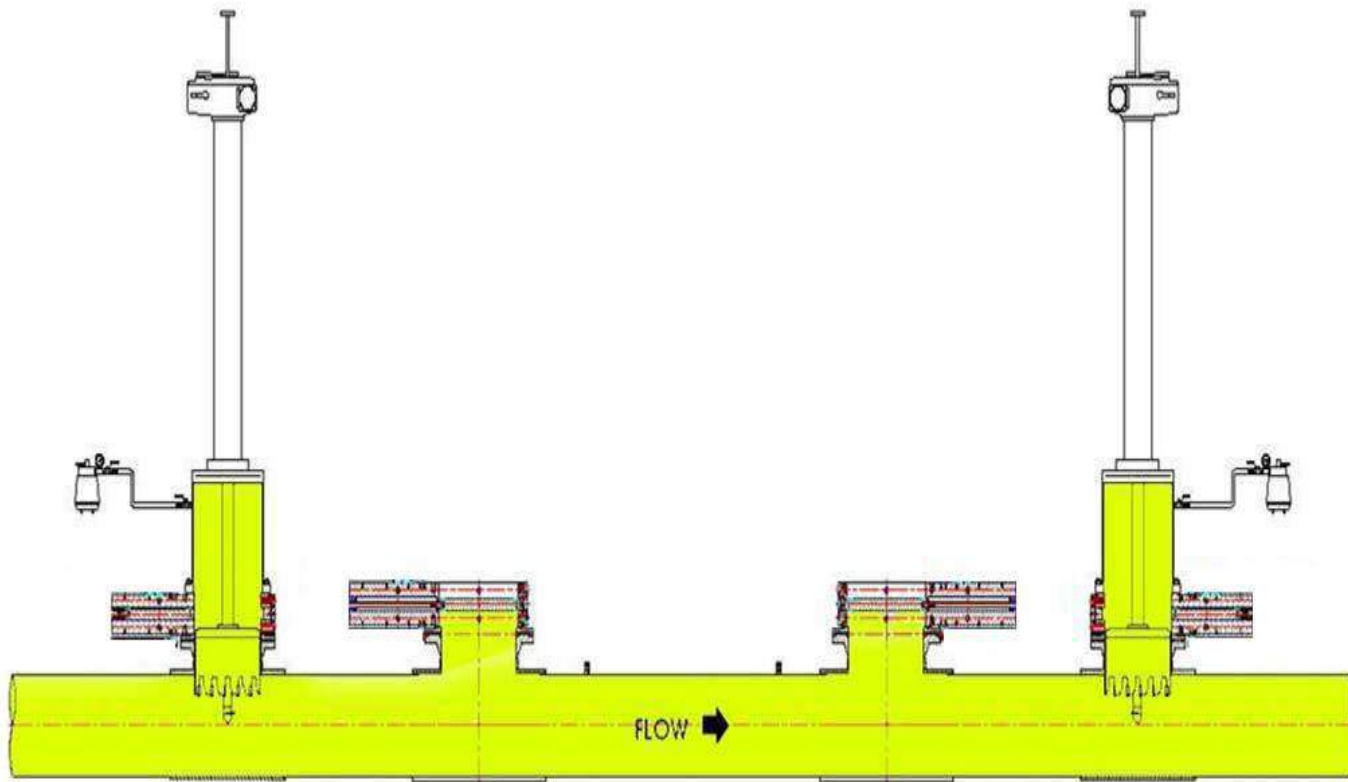


CHIP 제거



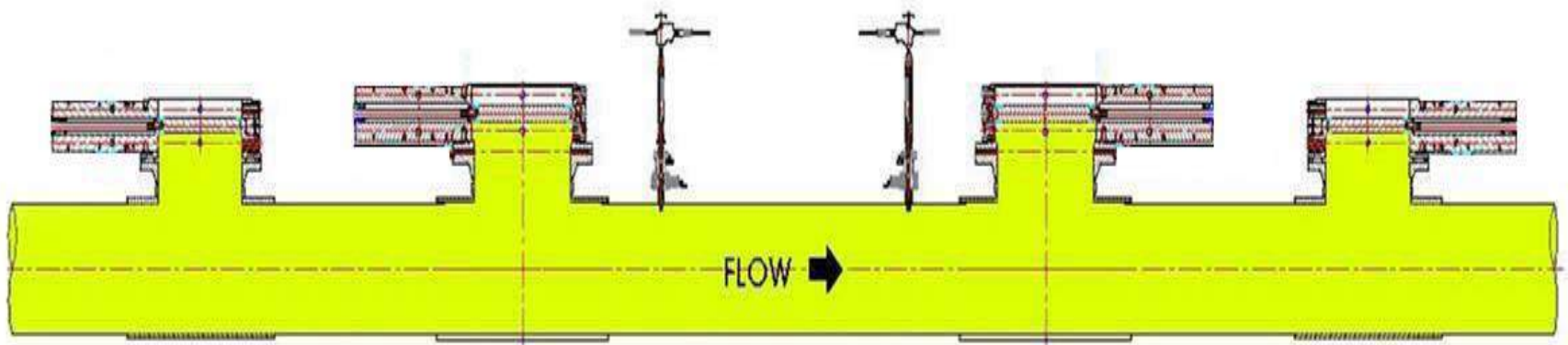


BY-PASS FITTING TAPPING





T.O.R TAPPING





2008/05/26 14:40

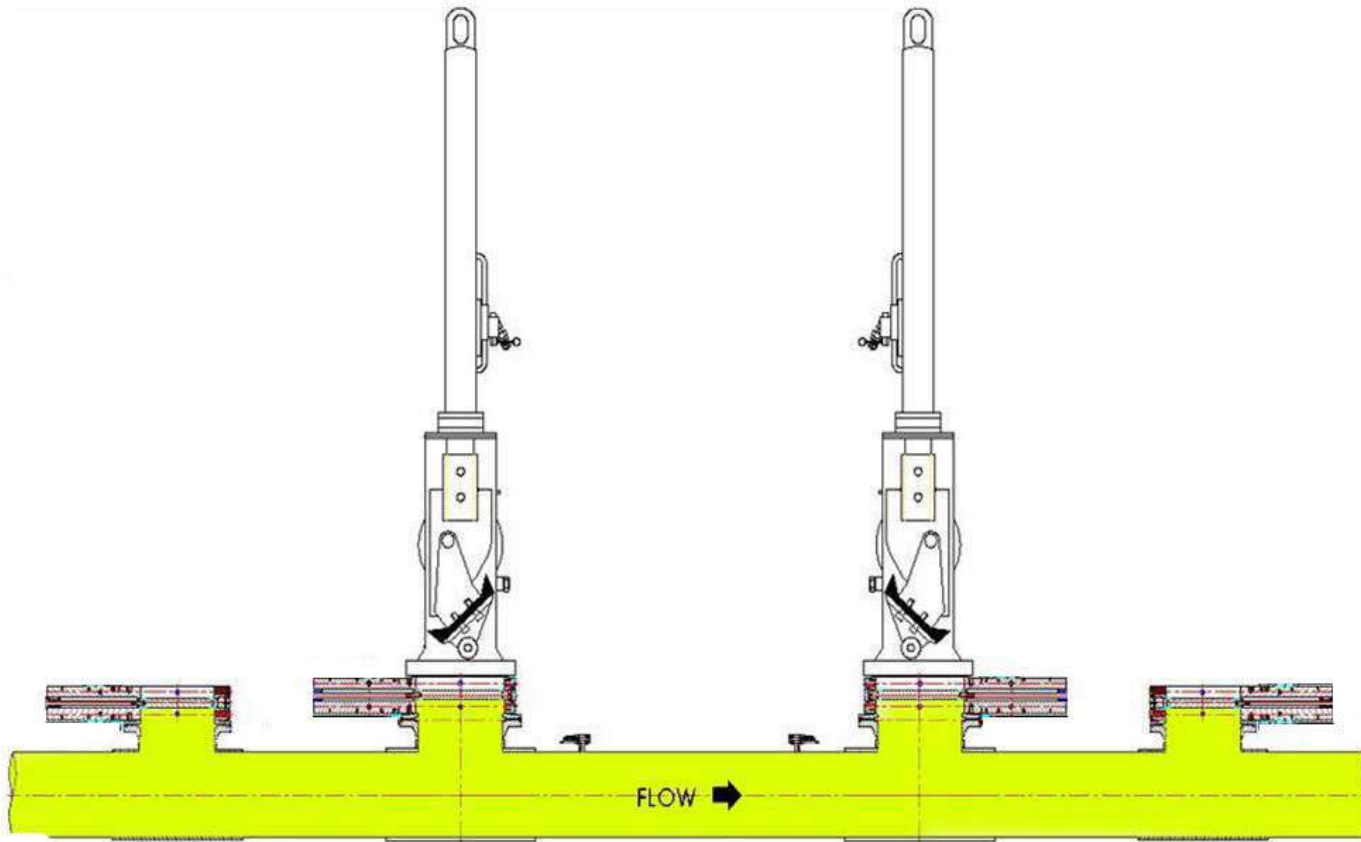


STOPPER M/C 조립



2008/05/27 09:07

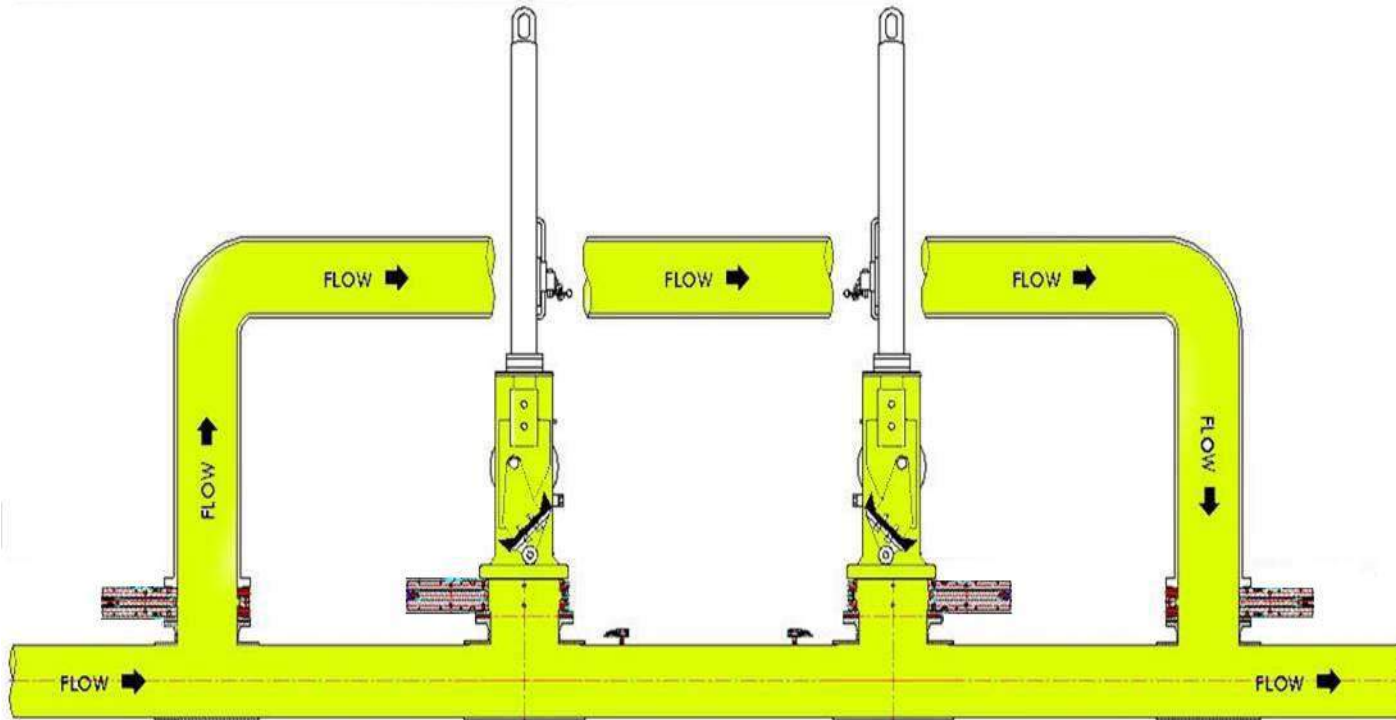
STPPOER M/C 설치





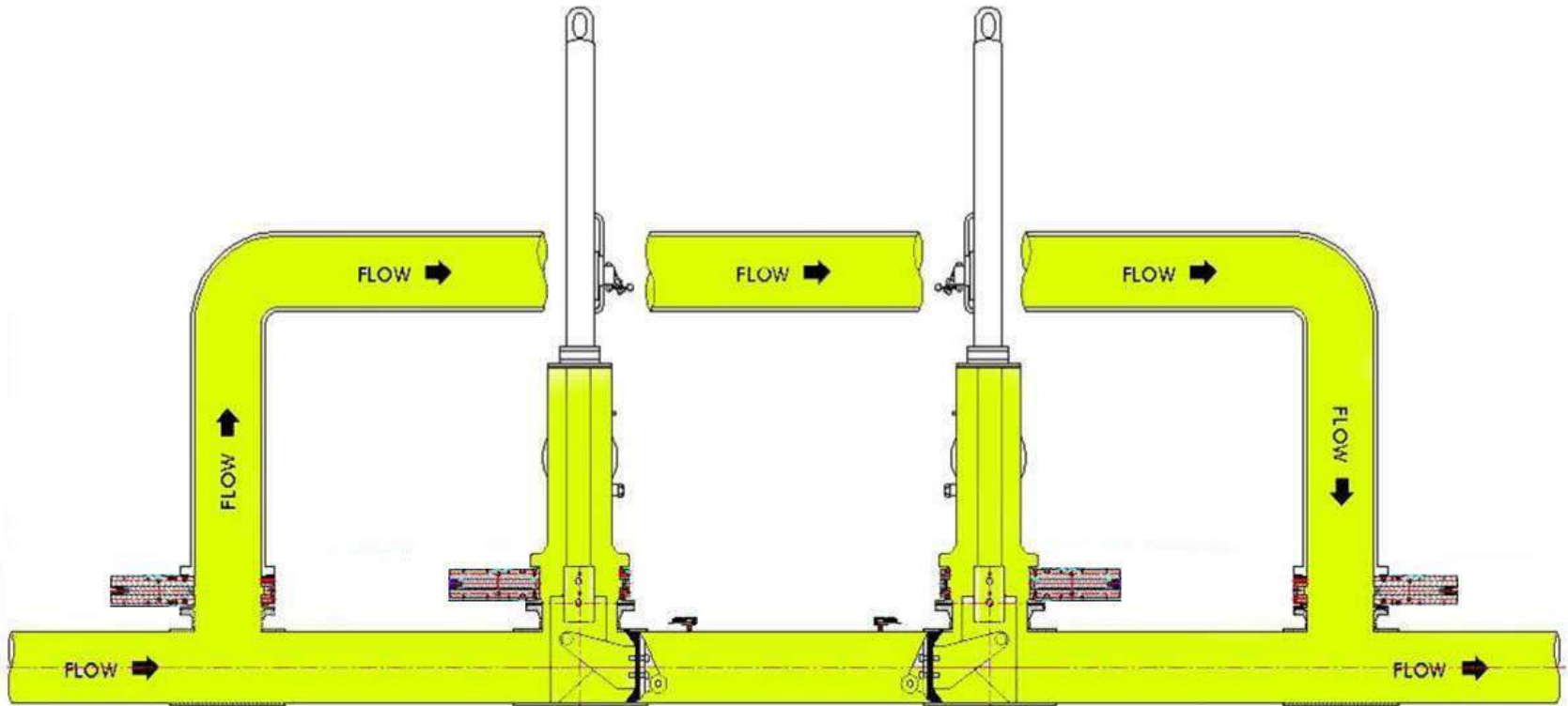
2008/05/29 09:50

BY-PASS 배관 개통



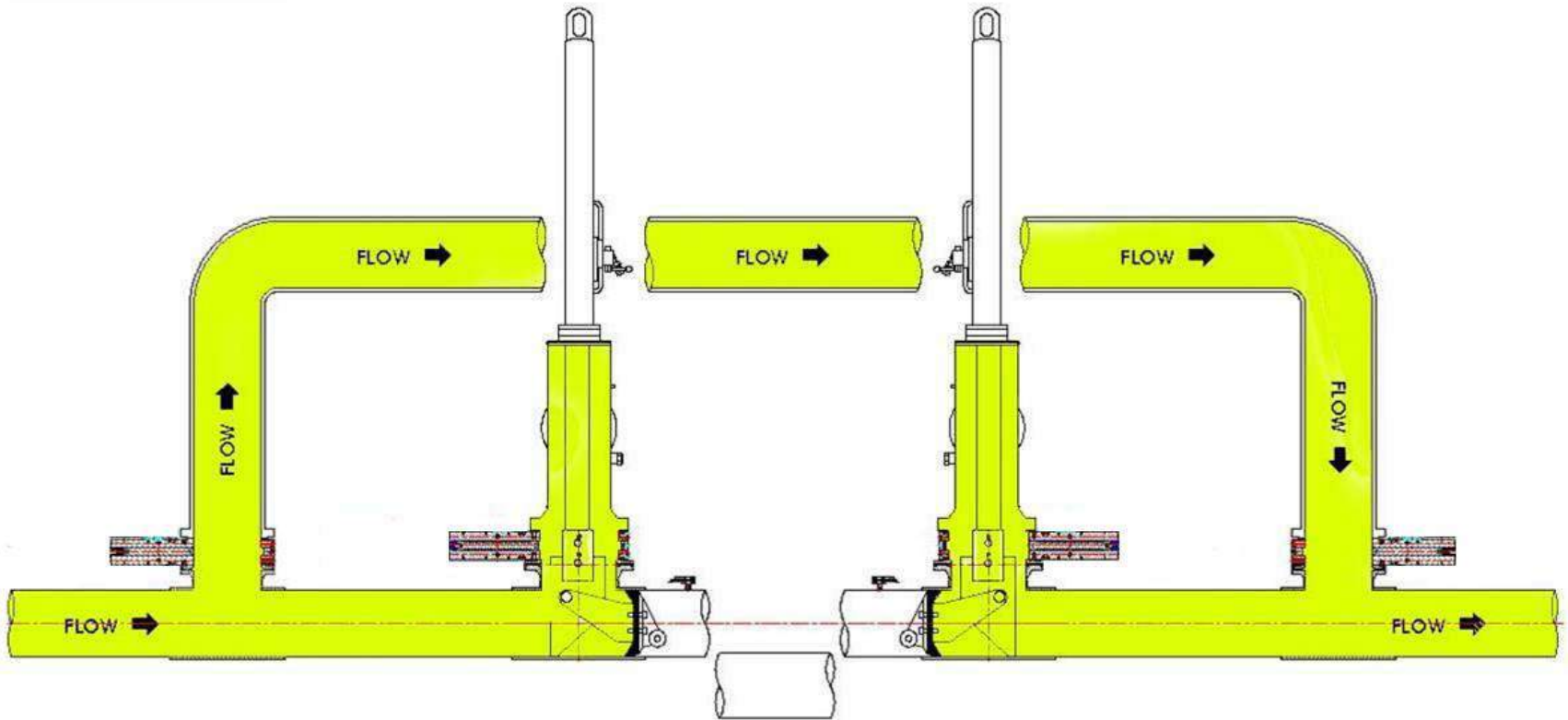


배관차단



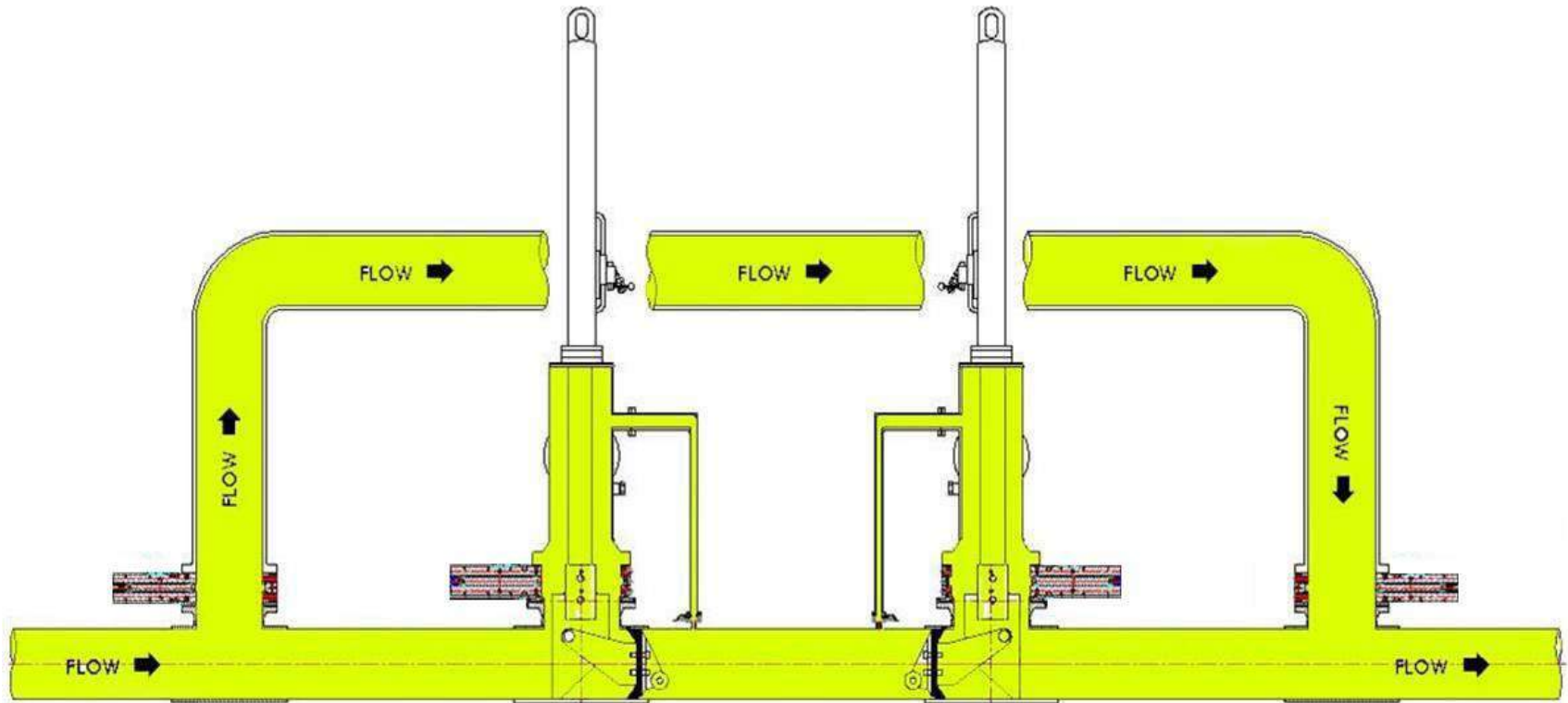


배관교체 및 연결

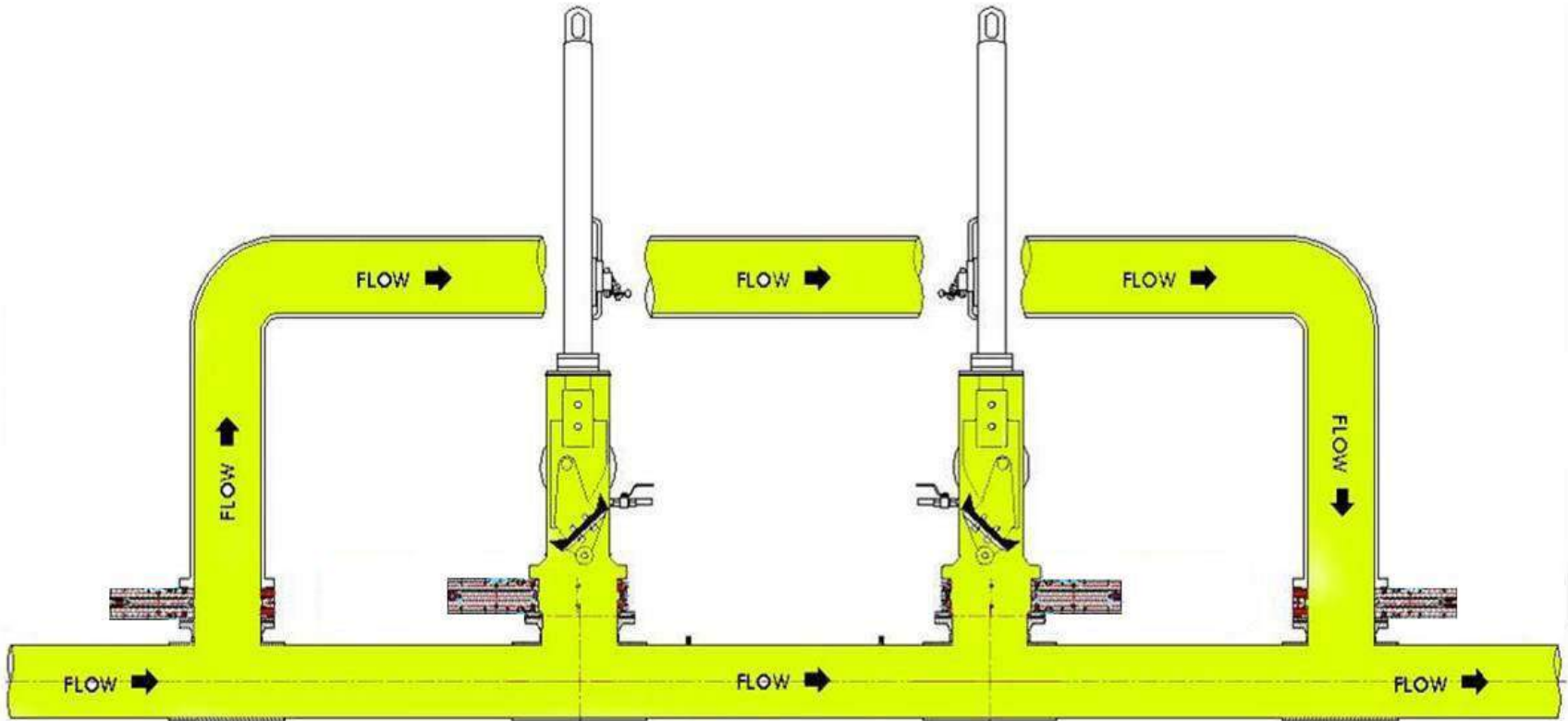




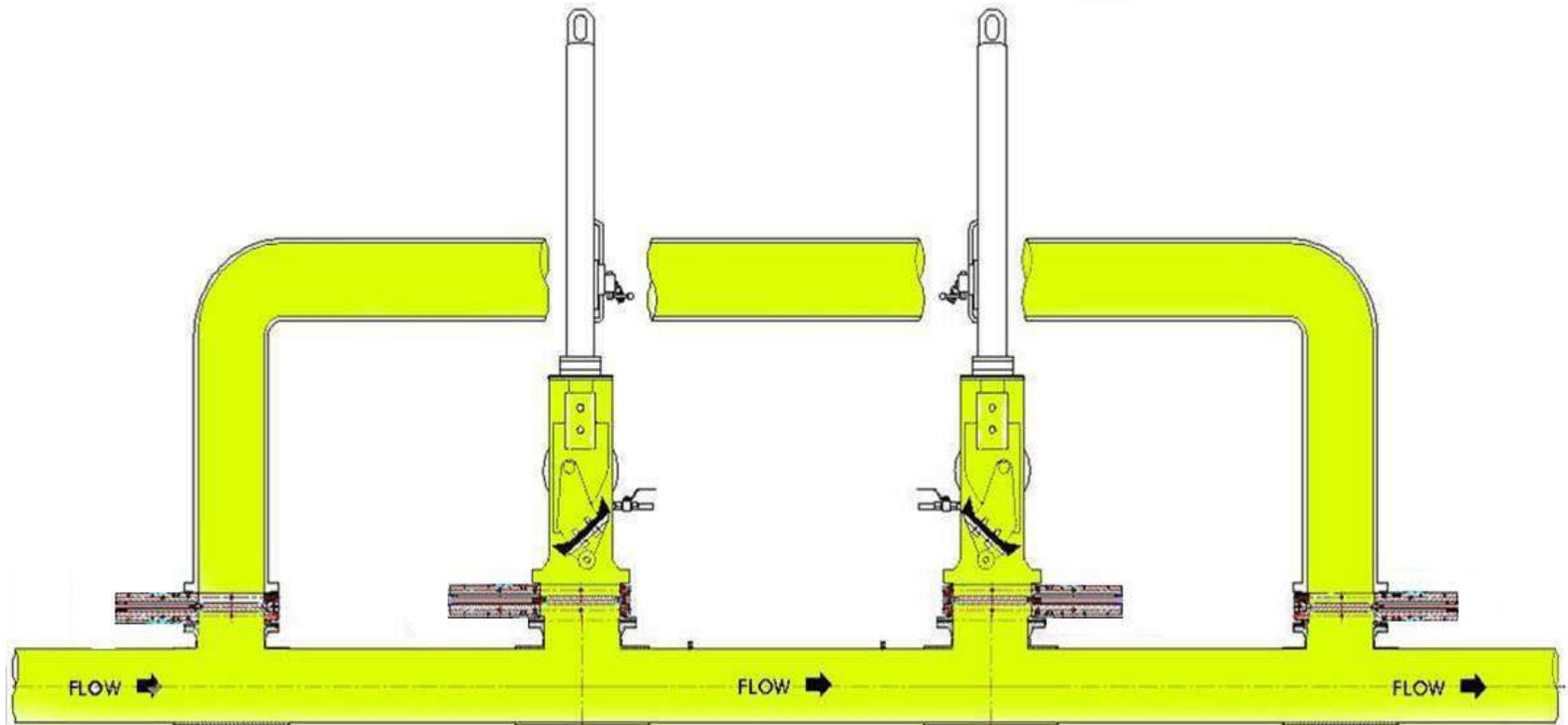
균압(통압)실시



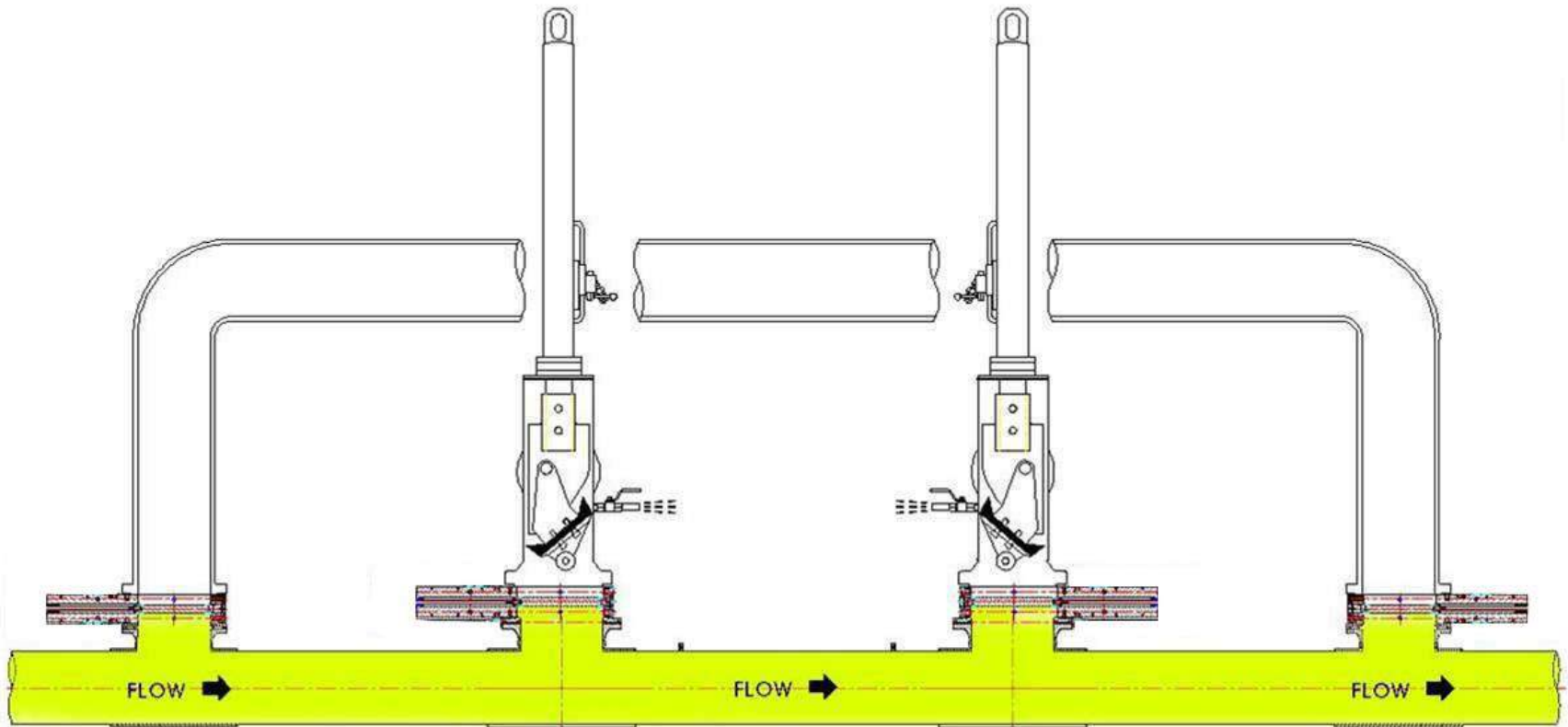
관로 정상화



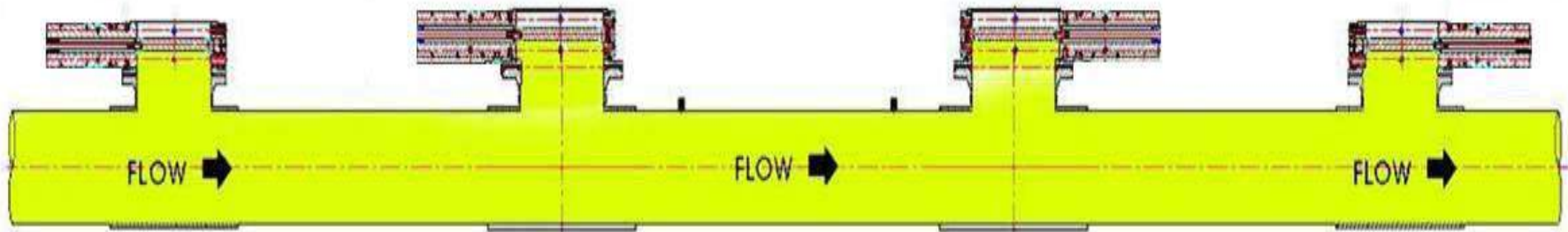
SANDWICH VALVE CLOSE



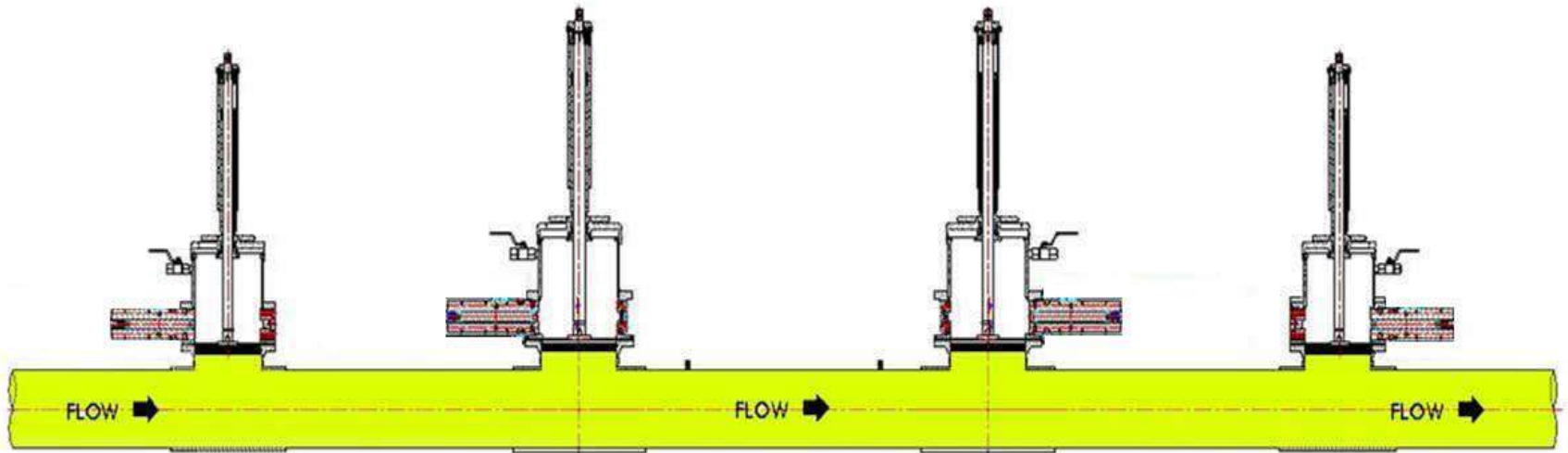
유체 방출



STOPPER M/C 철거



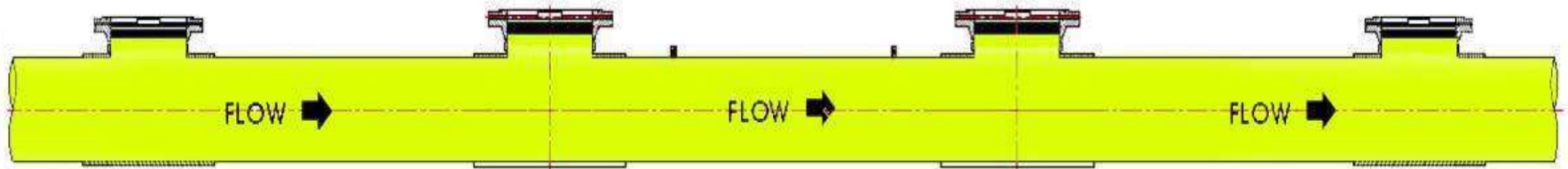
L.O.R PLUG 체결





2008/05/29 09:36

SANDWICH VALVE 철거





2008/05/26 15:38

BLIND FLANGE 체결

